

## DESCRIPTION AND USES



### Adjustability on site

Koncrete board density allows installers to easily jigsaw cut as if it is plywood!



### Light weight

Koncrete board is an authentic concrete-look decorative board that is made out of ultimate light weight composite and thin concrete film. Concrete has been increasingly popular amongst interior designers and architects because of its natural yet contemporary design elements. (8 kg/ sqm)



### 100% Hand craft

We manufacture Koncrete board in manual production/ handcraft process which allows us to fully response to customer needs and wants.



### Origin

Koncrete board is a decorative board that made out of light weight composite material and concrete has been increasingly popular amongst interior designer and architects because of its natural yet contemporary design elements.



### Moisture resistance

Koncrete board contains water repellent additive in the composite core so it is highly committed be used in areas of high humidity.



### Alternative material

Koncrete board is an alternative material to conventional ceramic tiles or wood which can also completely transform interior spaces in a different way.



### Wide range application

Can be used as wall and ceiling panel indoor for both commercial and residential environment including kitchens and bathrooms.



## STANDARD CONCRETE COLORS



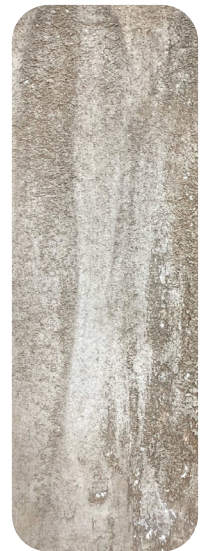
Classic Concrete



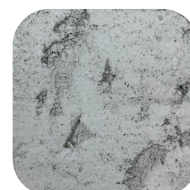
Ultra Fine Concrete



Damaged Concrete



Fossil Concrete



## SPECIFICATION

---

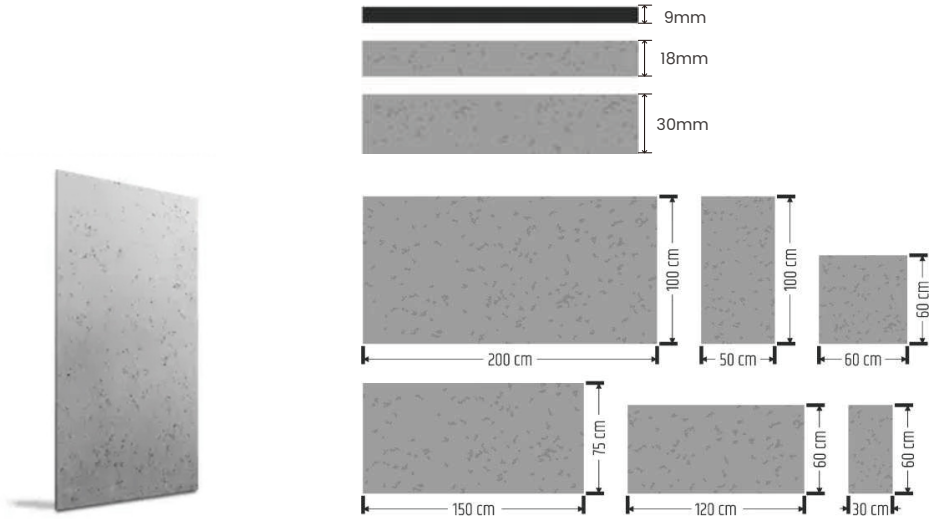
### Concrete Panels:

- Size:

200\*100cm, 50\*100cm  
60\*60cm, 150\*75cm  
120\*60cm, 30\*60cm

- Thickness:

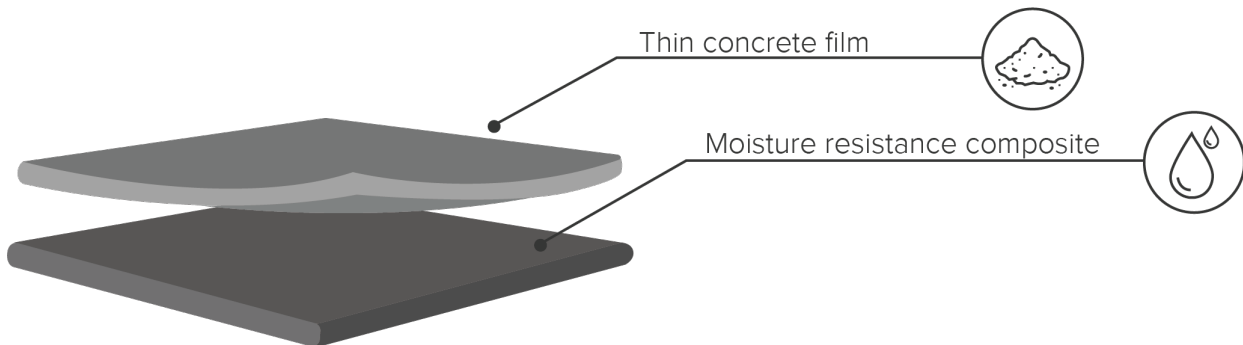
9mm  
18mm  
30mm



## COMPOSITION

---

- Thin concrete film
- Moisture resistance composite



## SUSTAINABILITY

---

### Wall Panels:

Our products have been independently tested for conformance with environmental requirements for VOC and formalde - hyde emissions; asbestos, lead, and cadmium content.

### Adhesive:

Concrete Wall Adhesive is a one-component, high-solids, modified-silane polymer with low VOC-content, low odor, and no shrinkage. It has high initial bond strength and is moisture curing, moisture resistant, and permanently elastic. It can also be used as a joint filler between panels and abutting surfaces; it is paintable, sandable, and grey in color.

## CONTACT

---

info@decoplus.com.hk

+852 2416 3618

www.decoplus.com.hk

Unit 1902, International Trade Centre,  
11 Sha Tsui Road, Tsuen Wan, Hong Kong